

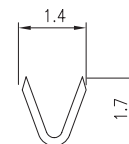
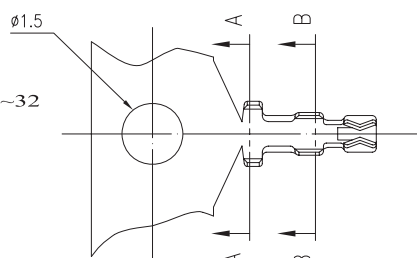
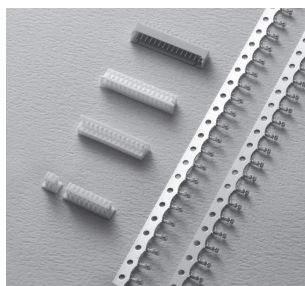
# 1.25mm .049" Center Wire to Board Connector



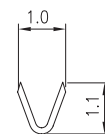
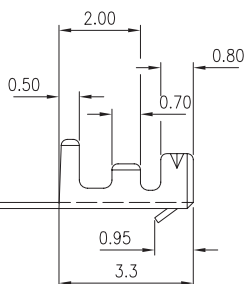
## 1025 Series

### ■ TERMINAL

- Part No.: 1025-T-T-S、1025-G-P
- Material: Phos. bronze
- Thickness: 0.15mm
- Plating: Tin plated、Gold plated
- Wire Range: Suitable for AWG#28~32
- Insulation O.D: 0.90mm (max)
- Q'TY: 10,000 pcs/reel
- Accepts housing : 1025-H



A-A SECTION



B-B SECTION

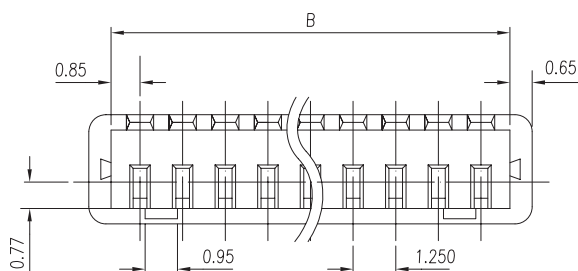
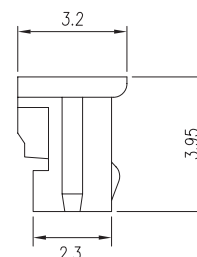
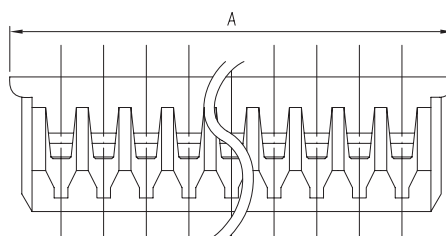
### Ordering Information

Part No.	Wire Range	Insulation O.D.	Material	Finish	Q'ty/reel
1025-T-T-S	AWG #28~#32	0.90mm (max)	Phosphor bronze	Tin Plated	10,000 pcs
1025-G-P	AWG #28~#32	0.90mm (max)	Phosphor bronze	Gold Plated	10,000 pcs

## 1025 Series

### ■ HOUSING

- Part No.: 1025-H
- Material: Nylon 66, UL94V-0
- Pitch: 1.25mm (.049")
- Poles: 2~15
- Q'TY: 1,000 pcs/bag
- Accepts terminals : 1025-T-T-S  
1025-G-P



### Ordering Information and Dimensions

CIRCUITS	PART NO.	DIMENSION	
		A	B
2	1025-H-02P	4.25	2.95
3	1025-H-03P	5.50	4.20
4	1025-H-04P	6.75	5.45
5	1025-H-05P	8.00	6.70
6	1025-H-06P	9.25	7.95
7	1025-H-07P	10.50	9.20
8	1025-H-08P	11.75	10.45

CIRCUITS	PART NO.	DIMENSION	
		A	B
9	1025-H-09P	13.00	11.70
10	1025-H-10P	14.25	12.95
11	1025-H-11P	15.50	14.20
12	1025-H-12P	16.75	15.45
13	1025-H-13P	18.00	16.70
14	1025-H-14P	19.25	17.95
15	1025-H-15P	20.50	19.20