

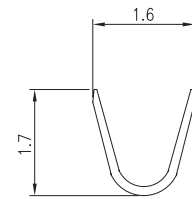
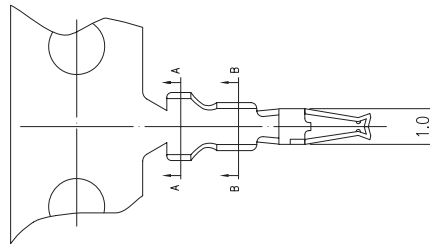
# 1.25mm .049" Center Wire to Board Connector



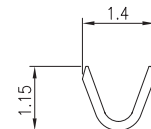
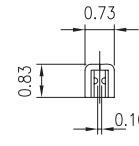
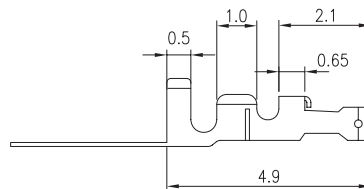
## 1253 Series

### ■ TERMINAL

- Part No.: 1253-T-T-S
- Material: Phos. bronze
- Thickness: 0.15mm
- Plating: Tin plated
- Wire Range: Suitable for AWG#28~32
- Insulation O.D: 0.90mm (max)
- Q'TY: 10,000 pcs/reel
- Accepts housing : 1253-H



A-A SECTION



B-B SECTION

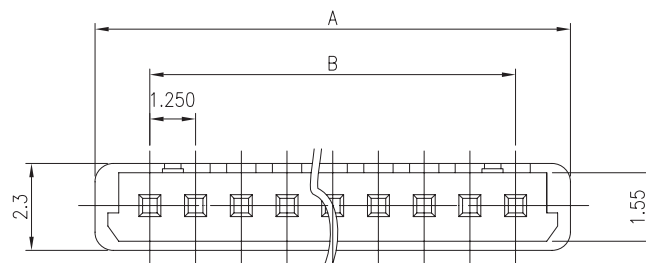
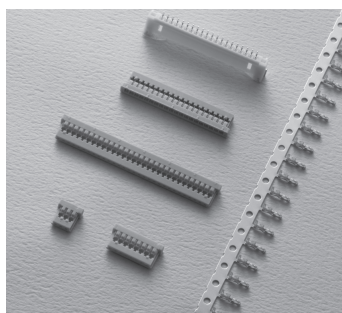
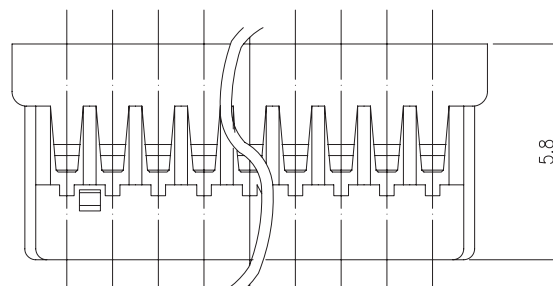
### Ordering Information

Part No.	Wire Range	Insulation O.D.	Material	Finish	Q'ty/reel	Note
1253-T-T-S	AWG #28~#32	0.90mm (max)	Phos. bronze	Tin Plated	10,000 pcs	

## 1253 Series

### ■ HOUSING

- Part No.: 1253-H
- Material: Nylon 66, UL94V-0
- Pitch: 1.25mm (.049")
- Poles: 2~10, 15, 20, 25, 30
- Q'TY: 1,000 pcs/bag
- Accepts terminals : 1253-T-T-S



### Ordering Information and Dimensions

CIRCUITS	PART NO.	DIMENSION	
		A	B
2	1253-H-02P	4.45	1.25
3	1253-H-03P	5.70	2.50
4	1253-H-04P	6.95	3.75
5	1253-H-05P	8.20	5.00
6	1253-H-06P	9.45	6.25
7	1253-H-07P	10.70	7.50
8	1253-H-08P	11.95	8.75

CIRCUITS	PART NO.	DIMENSION	
		A	B
9	1253-H-09P	13.20	10.00
10	1253-H-10P	14.45	11.25
15	1253-H-15P	20.70	17.50
20	1253-H-20P	26.95	23.75
25	1253-H-25P	33.20	30.00
30	1253-H-30P	39.45	36.25