

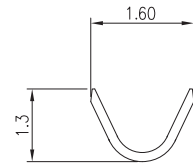
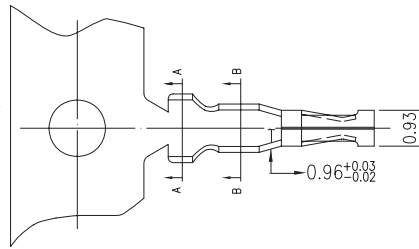
1.25mm .049" Center Wire to Board Connector



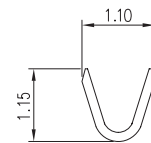
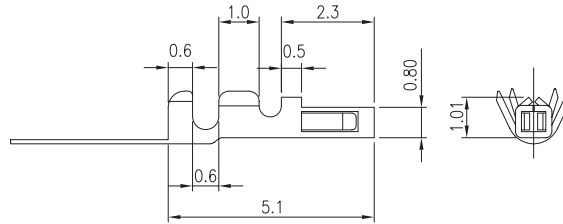
1258 Series

■ TERMINAL

- Part No.: 1258-G-P 、 1258-T-T-S
- Material: Phos. bronze
- Thickness: 0.15mm
- Plating: Gold plated 、 Tin plated
- Wire Range: Suitable for AWG#28~32
- Insulation O.D: 0.90mm (max)
- Q'TY: 15,000 pcs/reel
- Accepts housing : 1258-HS
1258-HD



A-A SECTION



B-B SECTION

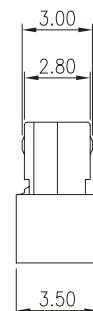
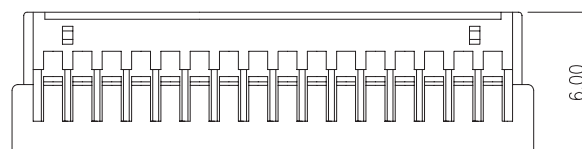
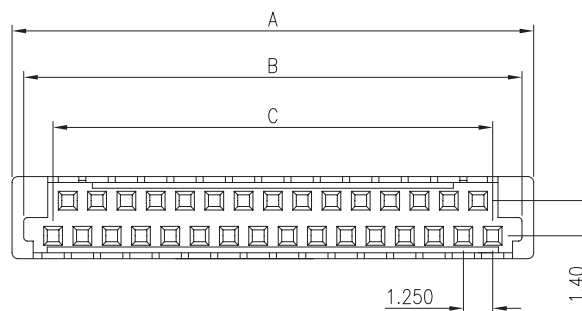
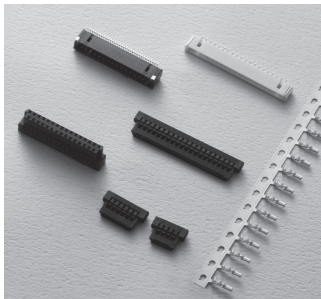
Ordering Information

Part No.	Wire Range	Insulation O.D.	Material	Finish	Q'ty/reel	Note
1258-G-P	AWG #28~#32	0.90mm (max)	Phos. bronze	Gold plated	15,000 pcs	
1258-T-T-S	AWG #28~#32	0.90mm (max)	Phos. bronze	Tin plated	15,000 pcs	

1258 Series

■ HOUSING

- Part No.: 1258-HD
- Material: Nylon 66, UL94V-0
- Pitch: 1.25mm (.049")
- Poles: 21, 31, 41
- Q'TY: 1,000 pcs/bag
- Accepts terminals : 1258-G-P
1258-T-T-S



Ordering Information and Dimensions

CIRCUITS	PART NO.	DIMENSION		
		A	B	C
21	1258-HD-21P	16.00	14.90	12.50
31	1258-HD-31P	22.25	21.15	18.75
41	1258-HD-41P	28.50	27.40	25.00

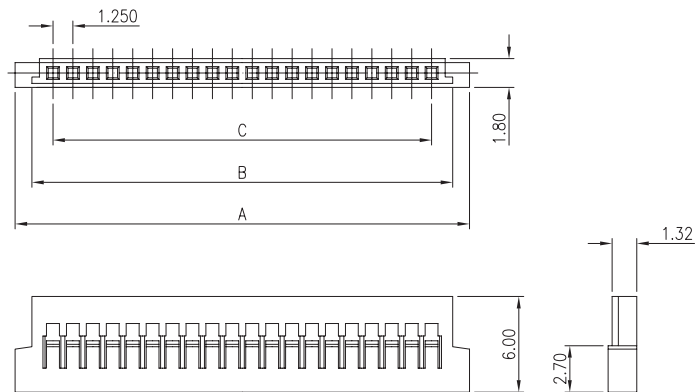
1.25mm .049" Center Wire to Board Connector



1258 Series

HOUSING

- Part No.: 1258-HS
- Material: Nylon 66, UL94V-0
- Pitch: 1.25mm (.049")
- Poles: 2~30
- Q'TY: 1,000 pcs/bag
- Accepts terminals : 1258-G-P
1258-T-T-S



Ordering Information and Dimensions

CIRCUITS	PART NO.	DIMENSION		
		A	B	C
2	1258-HS-2P	6.00	3.80	1.25
3	1258-HS-3P	7.25	5.05	2.50
4	1258-HS-4P	8.50	6.30	3.75
5	1258-HS-5P	9.75	7.55	5.00
6	1258-HS-6P	11.00	8.80	6.25
8	1258-HS-8P	13.50	11.30	8.75
10	1258-HS-10P	16.00	13.80	11.25
12	1258-HS-12P	18.50	16.30	13.75
15	1258-HS-15P	22.25	20.05	17.50
20	1258-HS-20P	28.50	26.30	23.75
25	1258-HS-25P	34.75	32.55	30.00
30	1258-HS-30P	41.00	38.80	36.25

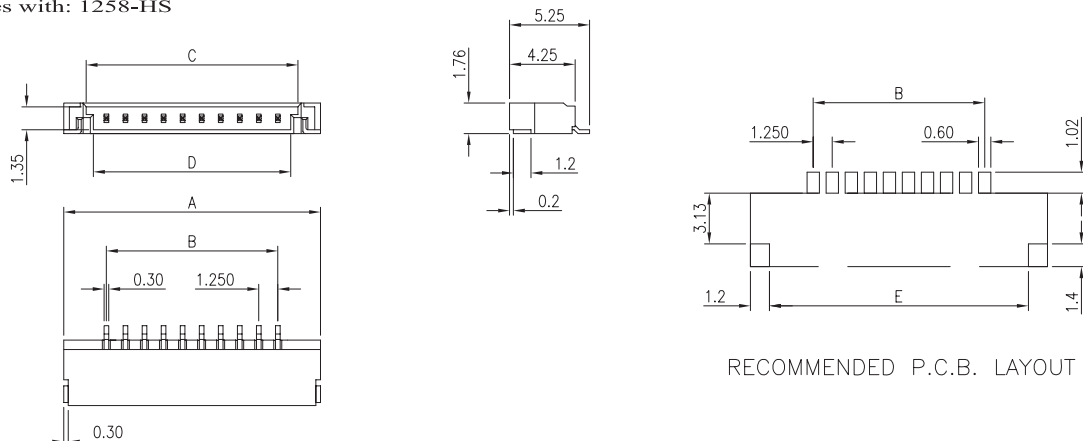
1258 Series

WAFER

- Part No.: 1258-SMTRA
- Materials:
Insulator: Nylon glass filled, UL94V-0
Terminal: Phosphor bronze, tin plated
Contact: Phosphor bronze, selective gold plated
- Poles: 2~30
- Mates with: 1258-HS

SPECIFICATIONS

- Voltage rating: 50V AC
- Current rating: 1A AC
- Withstand Voltage: 150V AC/minute
- Contact resistance: 50m Ohm max.
- Insulation Resistance: 500M Ohm min.
- Temperature Range: -25 ~ +85°C



RECOMMENDED P.C.B. LAYOUT

Ordering Information and Dimensions

CIRCUITS	PART NO.	DIMENSION				
		A	B	C	D	E
2	1258-SMTRA-02P	6.10	1.25	3.90	3.18	4.0
6	1258-SMTRA-06P	11.10	6.25	8.90	8.18	9.0
8	1258-SMTRA-08P	13.60	8.75	11.40	10.68	11.50
20	1258-SMTRA-20P	28.60	23.75	26.40	25.68	26.50
30	1258-SMTRA-30P	41.10	36.25	38.9	38.18	39.0