

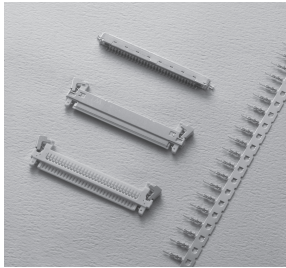
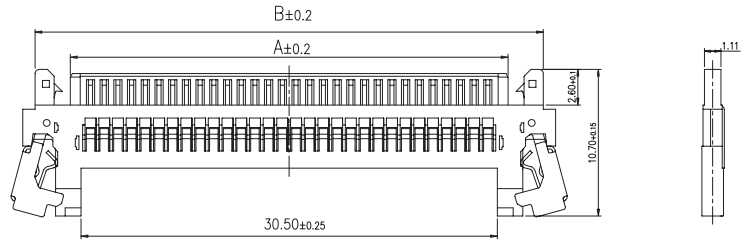
1.00mm .039" Center Wire to Board Connector



1058 Series

HOUSING

- Part No.: 1058-HL-30P
- Material:
 - Housing : Nylon 46, UL94-V0
 - Shell : Copper alloy/Nickel plated
 - Lock spring: Stainless steel
- Pitch: 1.0mm (.039")
- Poles: 30
- Q'TY: 100 pcs/box
- Accepts Terminal : 1058-G-P,1058-G-P-E
- Mates with : 1058-HL-SMTR-30P



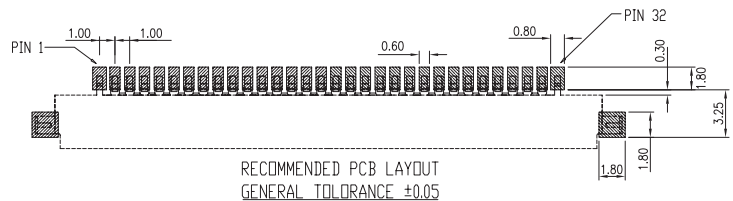
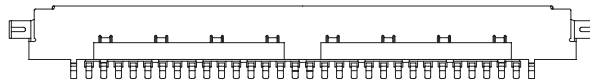
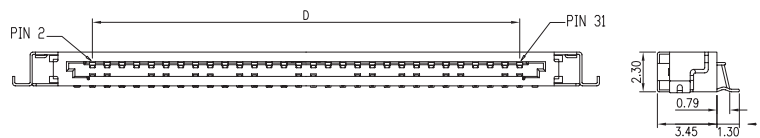
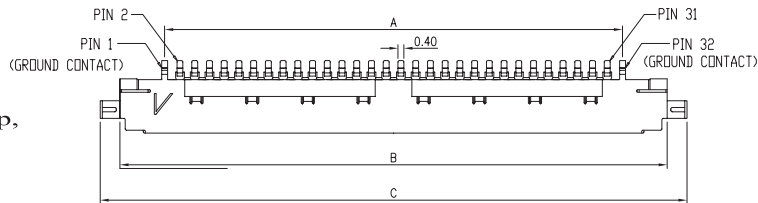
Ordering Information and Dimensions

CIRCUITS	PART NO.	DIMENSION	
		A	B
30	1058-HL-30P	31.92	36.95

1058 Series

WAFER

- Part No.: 1058-HL-SMTR-30P
- Material:
 - Housing: Thermoplastic, High Temp,
 - Color: Natural
 - Contact: Copper Alloy
- Contact: Gold Flash over all.
50u" Min Nickel Underplating Over All.
- Shell:
 - 100u" Min. Tin Plating on solder tails.
 - 50u" Min. Nickel Underplating on solder tails.
 - Reflow solder capable to 260°C
- Mates with : 1058-HL-30P



Ordering Information and Dimensions

CIRCUITS	PART NO.	DIMENSION			
		A	B	C	D
30	1058-HL-SMTR-30P	31.00	37.35	40.05	29.00