

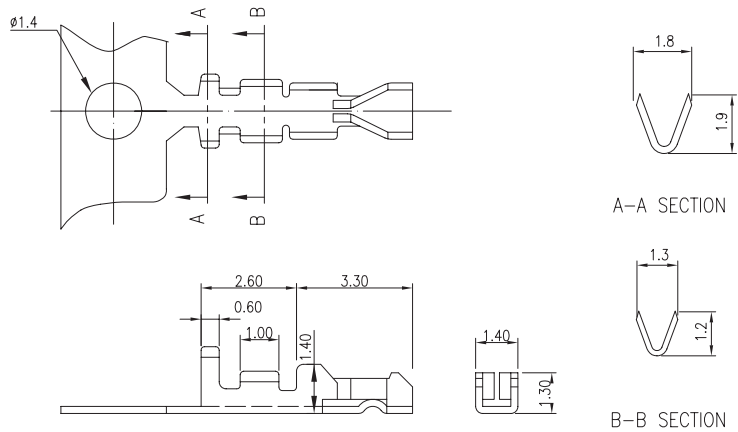
2.0mm .079" Center Wire to Board Connector



2004 Series

■ TERMINAL

- Part No.: 2004-G-P, 2004-T-T-S
- Material: Phos. bronze
- Thickness: 0.2mm
- Plating: Gold plated, Tin plated
- Wire Range: Suitable for AWG#26~30
- Insulation O.D.: 1.35mm (max)
- Q'TY: 10,000 pcs/reel
- Accepts housing : 2004-H, 2004-HL



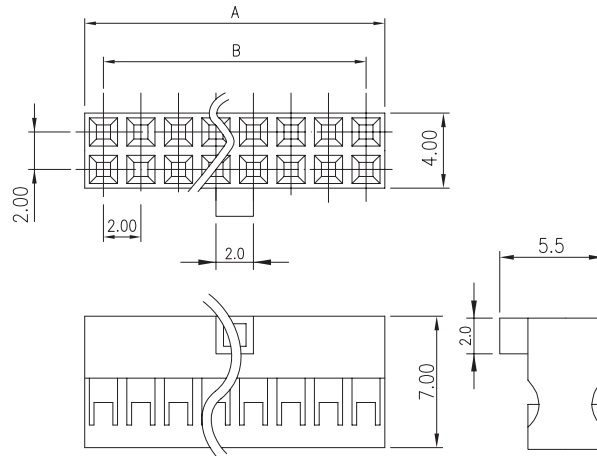
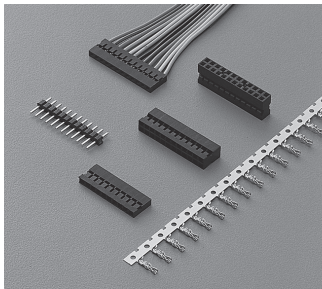
Ordering Information

Part No.	Wire Range	Insulation O.D.	Material	Finish	Q'ty/reel
2004-T-T-S	AWG #26~#30	1.35mm (max)	Phos. bronze	Tin Plated	10,000 pcs
2004-G-P	AWG #26~#30	1.35mm (max)	Phos. bronze	Gold Plated	10,000 pcs

2004 Series

■ HOUSING

- Part No.: 2004-HL
- Material: Nylon 66, UL94V-1
- Pitch: 2.0mm (.079")
- Poles: 4~80
- Q'TY: 1,000 pcs/bag
- Accepts terminals : 2004-G-P, 2004-T-T-S



Ordering Information and Dimensions

CIRCUITS	PART NO.	DIMENSION	
		A	B
4	2004-HL-2X2P	4.2	2.0
6	2004-HL-2X3P	6.2	4.0
8	2004-HL-2X4P	8.2	6.0
10	2004-HL-2X5P	10.2	8.0
12	2004-HL-2X6P	12.2	10.0
14	2004-HL-2X7P	14.2	12.0
16	2004-HL-2X8P	16.2	14.0
18	2004-HL-2X9P	18.2	16.0
20	2004-HL-2X10P	20.2	18.0
22	2004-HL-2X11P	22.2	20.0
24	2004-HL-2X12P	24.2	22.0
26	2004-HL-2X13P	26.2	24.0
28	2004-HL-2X14P	28.2	26.0
30	2004-HL-2X15P	30.2	28.0

CIRCUITS	PART NO.	DIMENSION	
		A	B
32	2004-HL-2X16P	32.2	30.0
34	2004-HL-2X17P	34.2	32.0
36	2004-HL-2X18P	36.2	34.0
38	2004-HL-2X19P	38.2	36.0
40	2004-HL-2X20P	40.2	38.0
42	2004-HL-2X21P	42.2	40.0
44	2004-HL-2X22P	44.2	42.0
46	2004-HL-2X23P	46.2	44.0
48	2004-HL-2X24P	48.2	46.0
50	2004-HL-2X25P	50.2	48.0
52	2004-HL-2X26P	52.2	50.0
54	2004-HL-2X27P	54.2	52.0
56	2004-HL-2X28P	56.2	54.0
58	2004-HL-2X29P	58.2	56.0

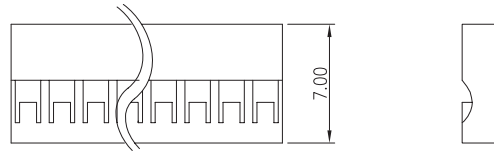
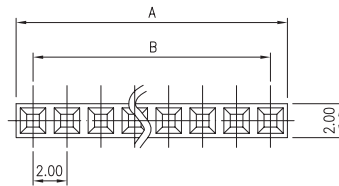
2.0mm .079" Center Wire to Board Connector



2004 Series

HOUSING

- Part No.: 2004-H
- Material: Nylon 66, UL94V-1
- Pitch: 2.0mm (.079")
- Poles: 2~40
- Q'TY: 1,000 pcs/bag
- Accepts terminals : 2004-G-P, 2004-T-T-S



Ordering Information and Dimensions

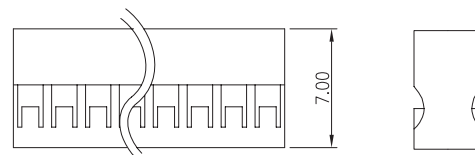
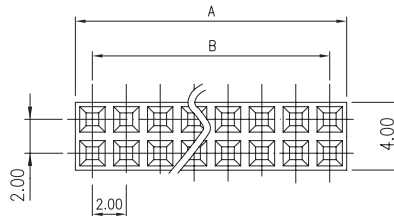
CIRCUITS	PART NO.	DIMENSION	
		A	B
2	2004-H-1X2P	4.2	2.0
3	2004-H-1X3P	6.2	4.0
4	2004-H-1X4P	8.2	6.0
5	2004-H-1X5P	10.2	8.0
6	2004-H-1X6P	12.2	10.0
7	2004-H-1X7P	14.2	12.0
8	2004-H-1X8P	16.2	14.0
9	2004-H-1X9P	18.2	16.0
10	2004-H-1X10P	20.2	18.0
11	2004-H-1X11P	22.2	20.0
12	2004-H-1X12P	24.2	22.0
13	2004-H-1X13P	26.2	24.0
14	2004-H-1X14P	28.2	26.0
15	2004-H-1X15P	30.2	28.0

CIRCUITS	PART NO.	DIMENSION	
		A	B
16	2004-H-1X16P	32.2	30.0
17	2004-H-1X17P	34.2	32.0
18	2004-H-1X18P	36.2	34.0
19	2004-H-1X19P	38.2	36.0
20	2004-H-1X20P	40.2	38.0
21	2004-H-1X21P	42.2	40.0
22	2004-H-1X22P	44.2	42.0
23	2004-H-1X23P	46.2	44.0
24	2004-H-1X24P	48.2	46.0
25	2004-H-1X25P	50.2	48.0
26	2004-H-1X26P	52.2	50.0
27	2004-H-1X27P	54.2	52.0
28	2004-H-1X28P	56.2	54.0
29	2004-H-1X29P	58.2	56.0

2004 Series

HOUSING

- Part No.:2004-H
- Material: Nylon 66, UL94V-1
- Pitch: 2.0mm (.079")
- Poles: 4~80
- Q'TY: 1,000 pcs/bag
- Accepts terminals : 2004-G-P, 2004-T-T-S



Ordering Information and Dimensions

CIRCUITS	PART NO.	DIMENSION	
		A	B
4	2004-H-2X2P	4.2	2.0
6	2004-H-2X3P	6.2	4.0
8	2004-H-2X4P	8.2	6.0
10	2004-H-2X5P	10.2	8.0
12	2004-H-2X6P	12.2	10.0
14	2004-H-2X7P	14.2	12.0
16	2004-H-2X8P	16.2	14.0
18	2004-H-2X9P	18.2	16.0
20	2004-H-2X10P	20.2	18.0
22	2004-H-2X11P	22.2	20.0
24	2004-H-2X12P	24.2	22.0
26	2004-H-2X13P	26.2	24.0
28	2004-H-2X14P	28.2	26.0
30	2004-H-2X15P	30.2	28.0

CIRCUITS	PART NO.	DIMENSION	
		A	B
32	2004-H-2X16P	32.2	30.0
34	2004-H-2X17P	34.2	32.0
36	2004-H-2X18P	36.2	34.0
38	2004-H-2X19P	38.2	36.0
40	2004-H-2X20P	40.2	38.0
42	2004-H-2X21P	42.2	40.0
44	2004-H-2X22P	44.2	42.0
46	2004-H-2X23P	46.2	44.0
48	2004-H-2X24P	48.2	46.0
50	2004-H-2X25P	50.2	48.0
52	2004-H-2X26P	52.2	50.0
54	2004-H-2X27P	54.2	52.0
56	2004-H-2X28P	56.2	54.0
58	2004-H-2X29P	58.2	56.0