

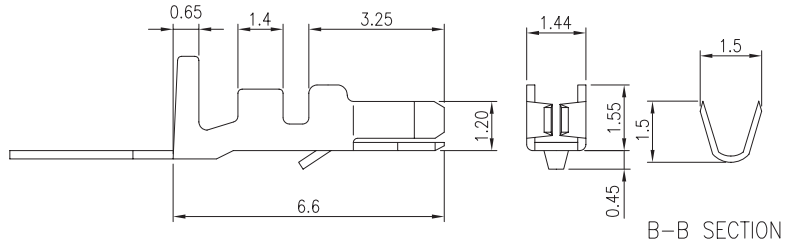
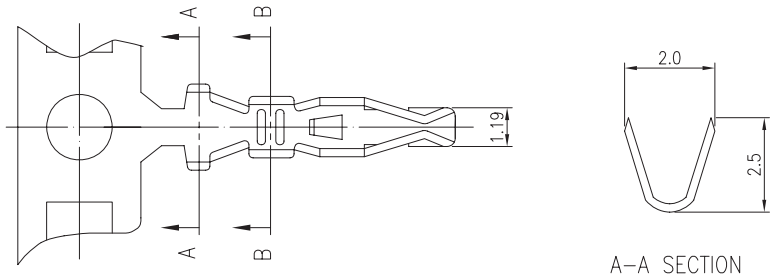
2.0mm .079" Center Wire to Board Connector



2005 Series

■ TERMINAL

- Part No.: 2005-T-T-S
- Material: Phos. bronze
- Thickness: 0.2mm
- Plating: Tin plated 60u"
- Wire Range: Suitable for AWG#24~28
- Insulation O.D.: 1.50mm (max)
- Q'TY: 10,000 pcs/reel
- Accepts housing : 2005-H



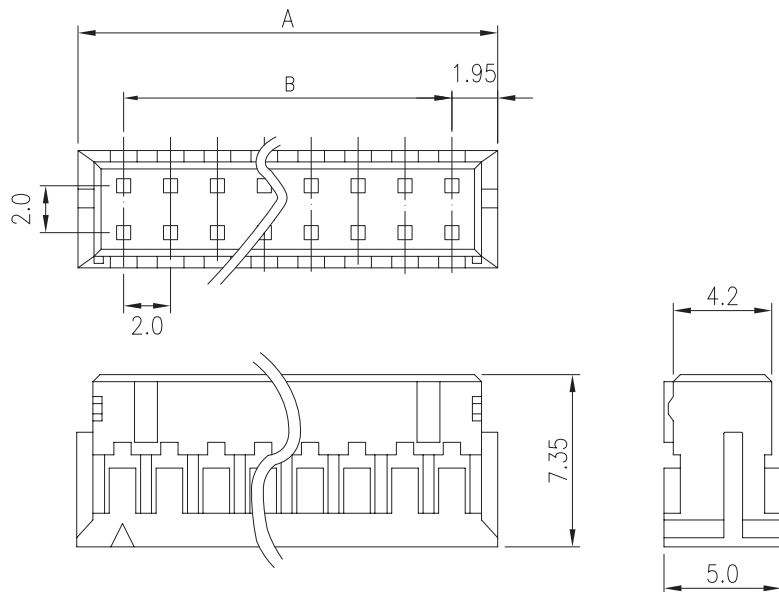
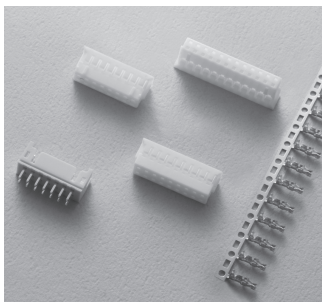
Ordering Information

Part No.	Wire Range	Insulation O.D.	Material	Finish	Q'ty/reel	Note
2005-T-T-S	AWG #24~#28	1.50mm (max)	Phos. bronze	Tin Plated	10,000 pcs	

2005 Series

■ HOUSING

- Part No.: 2005-H
- Material: Nylon 66, UL94V-2
- Pitch: 2.0mm (.079")
- Poles: 4~34(Double row)
- Q'TY: 1,000 pcs/bag
- Accepts terminals : 2005-T-T-S



Ordering Information and Dimensions

CIRCUITS	PART NO.	DIMENSION	
		A	B
4	2005-H-2X2P	5.9	2.0
6	2005-H-2X3P	7.9	4.0
8	2005-H-2X4P	9.9	6.0
10	2005-H-2X5P	11.9	8.0
12	2005-H-2X6P	13.9	10.0
14	2005-H-2X7P	15.9	12.0
16	2005-H-2X8P	17.9	14.0
18	2005-H-2X9P	19.9	16.0

CIRCUITS	PART NO.	DIMENSION	
		A	B
20	2005-H-2X10P	21.9	18.0
22	2005-H-2X11P	23.9	20.0
24	2005-H-2X12P	25.9	22.0
26	2005-H-2X13P	27.9	24.0
28	2005-H-2X14P	29.9	26.0
30	2005-H-2X15P	31.9	28.0
32	2005-H-2X16P	33.9	30.0
34	2005-H-2X17P	35.9	32.0