

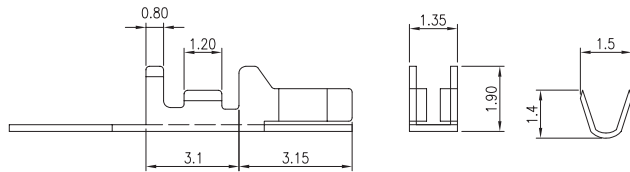
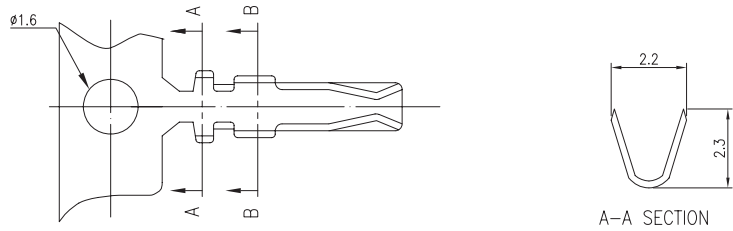
2.0mm .079" Center Wire to Board Connector



2300 Series

■ TERMINAL

- Part No.: 2300-T-T-S, 2300-G-P
- Material: Phos. bronze
- Thickness: 0.2mm
- Plating: Tin plated 60u", Gold plated
- Wire Range: Suitable for AWG#26~30
- Insulation O.D.: 1.40mm (max)
- Q'TY: 10,000 pcs/reel
- Accepts housing : 2300-H



B-B SECTION

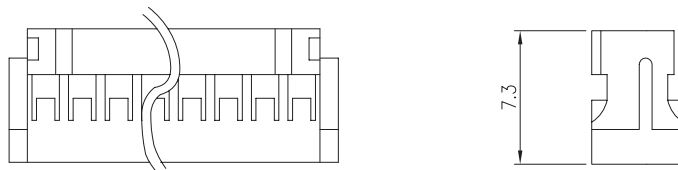
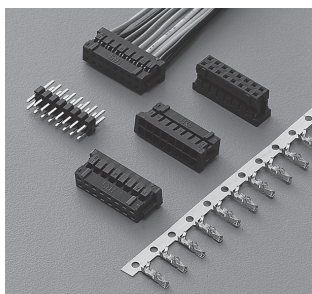
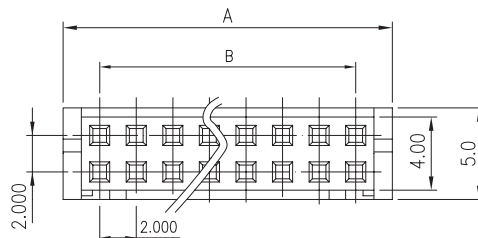
Ordering Information

Part No.	Wire Range	Insulation O.D.	Material	Finish	Q'ty/reel	Note
2300-T-T-S	AWG #26~#30	1.40mm (max)	Phos. bronze	Tin Plated	10,000 pcs	
2300-G-P	AWG #26~#30	1.40mm (max)	Phos. bronze	Gold Plated	10,000 pcs	

2300 Series

■ HOUSING

- Part No.: 2300-H
- Material: Nylon 66, UL94V-2
- Pitch: 2.0mm (.079")
- Poles: 4~34(Double row)
- Q'TY: 1,000 pcs/bag
- Accepts terminals : 2300-T-T-S
2300-G-P



Ordering Information and Dimensions

CIRCUITS	PART NO.	DIMENSION	
		A	B
4	2300-H-2X2P	6.0	2.0
6	2300-H-2X3P	8.0	4.0
8	2300-H-2X4P	10.0	6.0
10	2300-H-2X5P	12.0	8.0
12	2300-H-2X6P	14.0	10.0
14	2300-H-2X7P	16.0	12.0
16	2300-H-2X8P	18.0	14.0
18	2300-H-2X9P	20.0	16.0

CIRCUITS	PART NO.	DIMENSION	
		A	B
20	2300-H-2X10P	22.0	18.0
22	2300-H-2X11P	24.0	20.0
24	2300-H-2X12P	26.0	22.0
26	2300-H-2X13P	28.0	24.0
28	2300-H-2X14P	30.0	26.0
30	2300-H-2X15P	32.0	28.0
32	2300-H-2X16P	34.0	30.0
34	2300-H-2X17P	36.0	32.0