

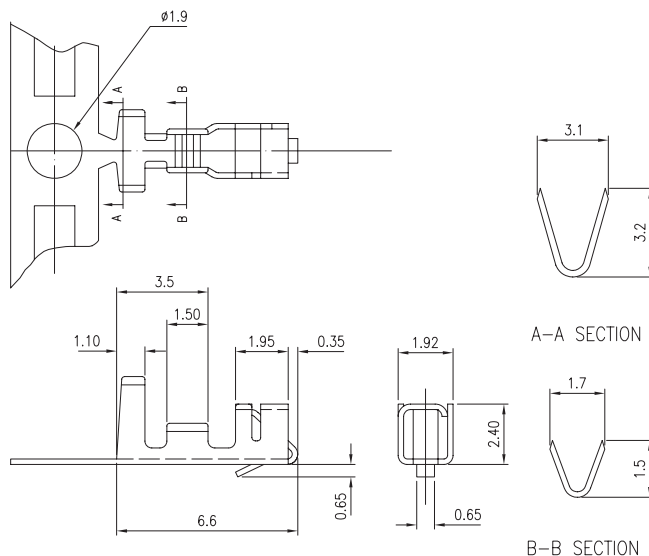
2.5mm .098" Center Wire to Board Connector



5011 Series

■ TERMINAL

- Part No.: 5011-T-T-S
- Material: Brass or Phos. bronze
- Thickness: 0.2mm
- Plating: Tin plated 60u"
- Wire Range: Suitable for AWG#22~28
- Insulation O.D: 1.90mm (max)
- Q'TY: 8,000 pcs/reel
- Accepts housing : 5011-H



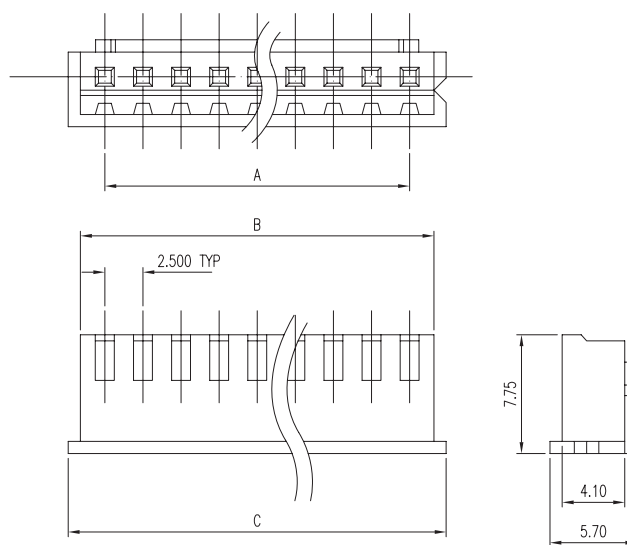
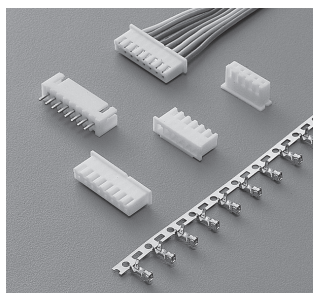
Ordering Information

Part No.	Wire Range	Insulation O.D.	Material	Finish	Q'ty/reel
5011-T-T-S	AWG #22~#28	1.90mm (max)	Phos. bronze	Tin Plated	8,000 pcs

5011 Series

■ HOUSING

- Part No.: 5011-H
- Material: Nylon 66, UL94V-2
- Pitch: 2.5mm (.098")
- Poles: 2~20
- Q'TY: 1,000 pcs/bag
- Accepts terminals : 5011-T-T-S



Ordering Information and Dimensions

CIRCUITS	PART NO.	DIMENSION		
		A	B	C
2	5011-H-02P	2.50	5.70	7.30
3	5011-H-03P	5.00	8.20	9.80
4	5011-H-04P	7.50	10.70	12.30
5	5011-H-05P	10.00	13.20	14.80
6	5011-H-06P	12.50	15.70	17.30
7	5011-H-07P	15.00	18.20	19.80
8	5011-H-08P	17.50	20.70	22.30
9	5011-H-09P	20.00	23.20	24.80
10	5011-H-10P	22.50	25.70	27.30
11	5011-H-11P	25.00	28.20	29.80

CIRCUITS	PART NO.	DIMENSION		
		A	B	C
12	5011-H-12P	27.50	30.70	32.30
13	5011-H-13P	30.00	33.20	34.80
14	5011-H-14P	32.50	35.70	37.30
15	5011-H-15P	35.00	38.20	39.80
16	5011-H-16P	37.50	40.70	42.30
17	5011-H-17P	40.00	43.20	44.80
18	5011-H-18P	42.50	45.70	47.30
19	5011-H-19P	45.00	48.20	49.80
20	5011-H-20P	47.50	50.70	52.30