

1.00mm .039" Center Wire to Board Connector



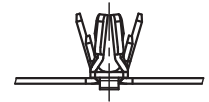
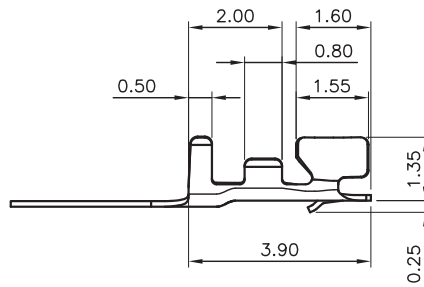
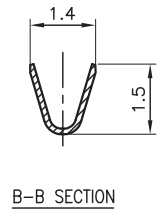
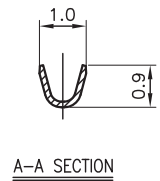
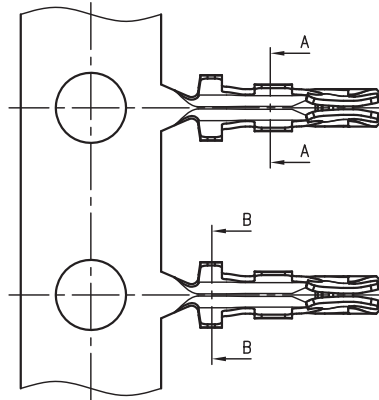
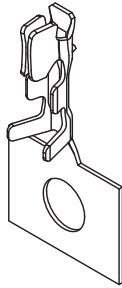
1010 Series

■ TERMINAL

Part No.: 1010-G-P
1010-T-T-S

Material

Terminal: Copper Alloy
Thickness: 0.12mm
Plating: Gold plated, Tin plated
Applicable Wire: AWG#28~AWG#32
Insulation O.D: 0.8mm(Max)
Q'TY : 15,000 pcs/ reel
Accepts housing: 1010-H-xxP
1010-H-2×xxP
1011-H-xxP



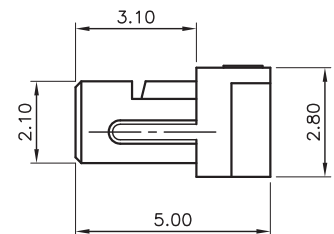
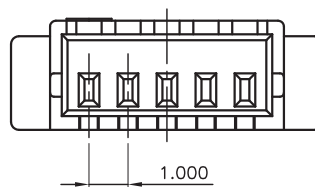
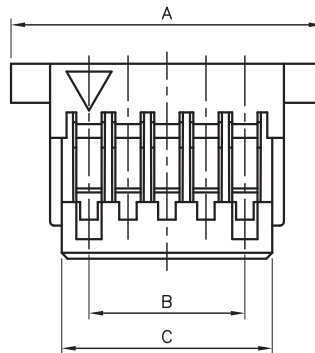
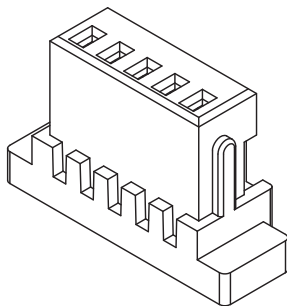
1010 Series

■ HOUSING

Part No.: 1010-H-xxP

Material

Housing: Thermal Plastic, UL 94V-0
Pitch: 1.00mm (.039")
Circuits: 2~30
Q'TY : 1,000 pcs/ bag
Accepts terminal: 1010-G-P
1010-T-T-S



Ordering Information and Dimensions

CIRCUITS	PART NO.	DIMENSION		
		A	B	C
2	1010-H-02P	5.0	1.00	2.40
3	1010-H-03P	6.0	2.00	3.40
4	1010-H-04P	7.0	3.00	4.40
5	1010-H-05P	8.0	4.00	5.40
6	1010-H-06P	9.0	5.00	6.40
7	1010-H-07P	10.0	6.00	7.40
8	1010-H-08P	11.0	7.00	8.40
9	1010-H-09P	12.0	8.00	9.40

CIRCUITS	PART NO.	DIMENSION		
		A	B	C
10	1010-H-10P	13.0	9.00	10.40
11	1010-H-11P	14.0	10.00	11.40
12	1010-H-12P	15.0	11.00	12.40
13	1010-H-13P	16.0	12.00	13.40
14	1010-H-14P	17.0	13.00	14.40
15	1010-H-15P	18.0	14.00	15.40
16	1010-H-16P	19.0	15.00	16.40
17	1010-H-17P	20.0	16.00	17.40

CIRCUITS	PART NO.	DIMENSION		
		A	B	C
18	1010-H-18P	21.0	17.00	18.40
19	1010-H-19P	22.0	18.00	19.40
20	1010-H-20P	23.0	19.00	20.40
22	1010-H-22P	25.0	21.00	22.40
24	1010-H-24P	27.0	23.00	24.40
26	1010-H-26P	29.0	25.00	26.40
30	1010-H-30P	33.0	29.00	30.40

1.00mm .039" Center Wire to Board Connector



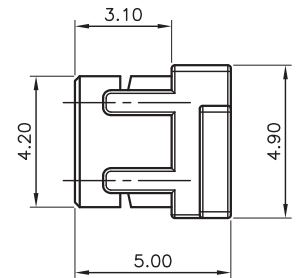
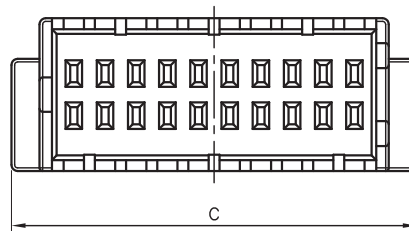
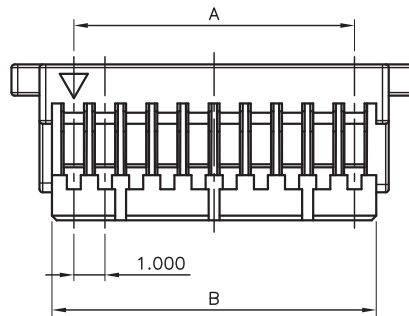
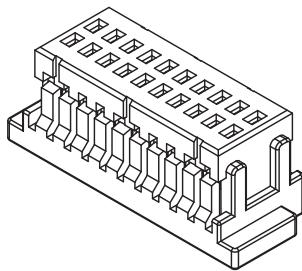
1010 Series

HOUSING

Part No.: 1010-H-2×xxP

Material

Housing: Thermal Plastic, UL 94V-0
 Pitch: 1.00mm (.039")
 Circuits: 20, 30, 40, 50
 Q'TY : 500 pcs/ bag
 Accepts terminal: 1010-G-P
 1010-T-T-S



Ordering Information and Dimensions

CIRCUITS	PART NO.	DIMENSION		
		A	B	C
10	1010-H-2×5P	4.00	5.40	8.0
12	1010-H-2×6P	5.00	6.40	9.0
16	1010-H-2×8P	7.00	8.40	11.0
20	1010-H-2×10P	9.00	10.40	13.0
22	1010-H-2×11P	10.00	11.40	14.0

CIRCUITS	PART NO.	DIMENSION		
		A	B	C
24	1010-H-2×12P	11.00	12.40	15.0
30	1010-H-2×15P	14.00	15.40	18.0
40	1010-H-2×20P	19.00	20.40	23.0
50	1010-H-2×25P	24.00	25.40	28.0

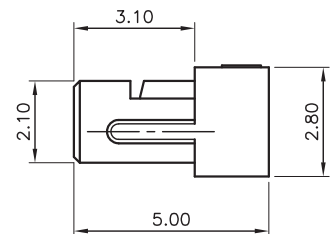
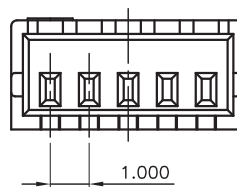
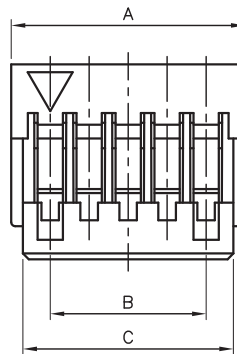
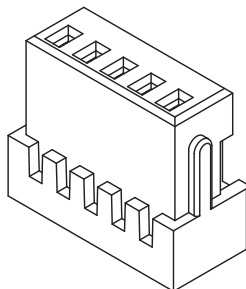
1011 Series

HOUSING

Part No.: 1011-H-xxP

Material

Housing: Thermal Plastic, UL 94V-0
 Pitch: 1.00mm (.039")
 Circuits: 2~30
 Q'TY : 1,000 pcs/ bag
 Accepts terminal: 1010-G-P
 1010-T-T-S



Ordering Information and Dimensions

CIRCUITS	PART NO.	DIMENSION		
		A	B	C
2	1011-H-02P	3.0	1.00	2.40
3	1011-H-03P	4.0	2.00	3.40
4	1011-H-04P	5.0	3.00	4.40
5	1011-H-05P	6.0	4.00	5.40
6	1011-H-06P	7.0	5.00	6.40
7	1011-H-07P	8.0	6.00	7.40
8	1011-H-08P	9.0	7.00	8.40
9	1011-H-09P	10.0	8.00	9.40

CIRCUITS	PART NO.	DIMENSION		
		A	B	C
10	1011-H-10P	11.0	9.00	10.40
11	1011-H-11P	12.0	10.00	11.40
12	1011-H-12P	13.0	11.00	12.40
13	1011-H-13P	14.0	12.00	13.40
14	1011-H-14P	15.0	13.00	14.40
15	1011-H-15P	16.0	14.00	15.40
16	1011-H-16P	17.0	15.00	16.40
17	1011-H-17P	18.0	16.00	17.40

CIRCUITS	PART NO.	DIMENSION		
		A	B	C
18	1011-H-18P	19.0	17.00	18.40
19	1011-H-19P	20.0	18.00	19.40
20	1011-H-20P	21.0	19.00	20.40
22	1011-H-22P	23.0	21.00	22.40
24	1011-H-24P	25.0	23.00	24.40
26	1011-H-26P	27.0	25.00	26.40
30	1011-H-30P	31.0	29.00	30.40